

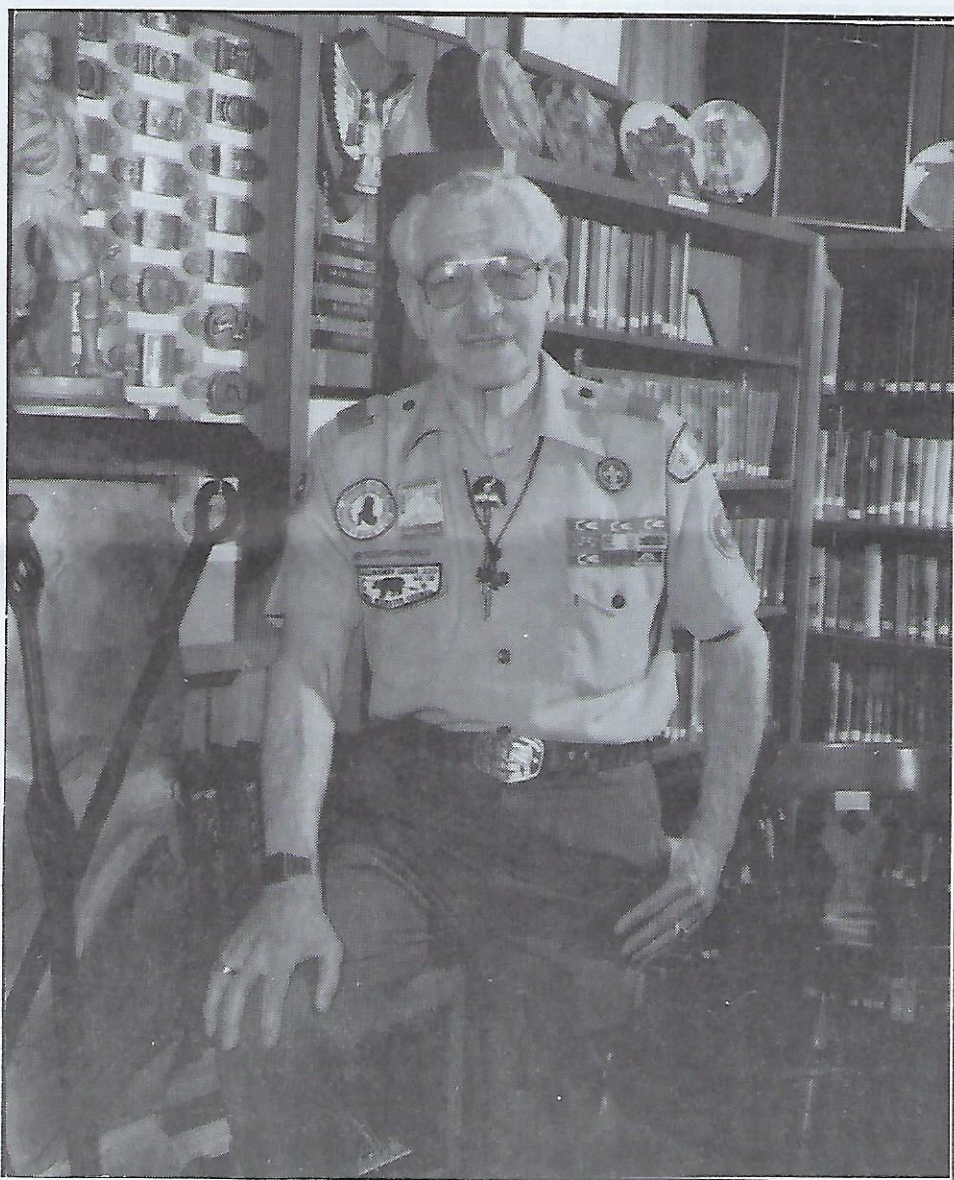
Max Silber's

FRIENDSHIP GIFTS Lawrence L. Lee Scouting Museum



In 1949, Max I. Silber from Nashua, NH and Executive Board member of the Daniel Webster Council was appointed Chairman of the Council's National Jamboree Committee. The Committee selected the leaders (including Max as Scoutmaster), planned the training and trip to Valley Forge, and wondered what sort of friendship gifts to provide for the Scouts of New Hampshire. Max was in the bronze business and offered his product. The Committee agreed to produce a bronze bust of George Washington on a wooden plaque, a small bronze frying pan, and a round plaque featuring that famous New Hampshire landmark, the Old Man of the Mountains.

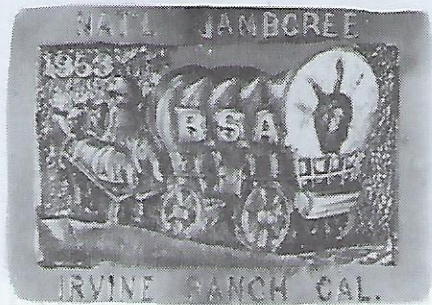
George Nuttle, Ranger at Camp Carpenter and Jamboree Scoutmaster, then suggested a bronze belt buckle. The final decision was a half-moon shaped buckle, again picturing the Old Man, thus identifying the wearer as a Scout or Scouter from New Hampshire. Max gave three buckles to each Scout and Leader, and a tradition was born.





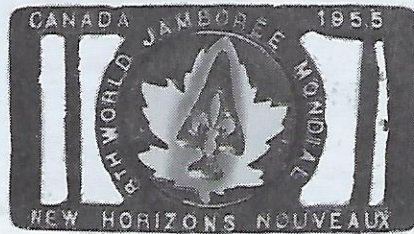
The original buckle and its successors were produced using the sand cast method from 85-5-5-5 commercial bronze on a pattern making eight buckles at a time. The first casting is "flat" and used as a sample for Max's approval. The first buckle and the second had the loop and hook braised on, and not cast. In addition to being difficult to produce, this resulted in many broken loops.

For the 1953 Jamboree, Max was selected to serve as National Safety Chairman, and he again wanted to present a gift to New Hampshire Scouts and to the men of the Region I staff who had given their time to serve Scouts at the Jamboree. The covered wagon design was taken from the official patch and the buckle was a much sought-after souvenir.



The 8th World Jamboree was held at Niagara, Ontario, Canada in 1955. For this event, Max was

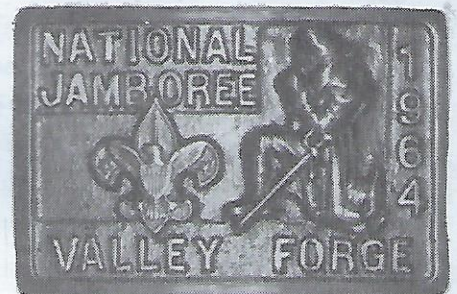
Scoutmaster of Troop 1. He produced two different buckles for the Jamboree, both in a new two-piece interlocking design. The Jamboree and Region 1 buckles were given to regional Scouts and Scouters and presented to foreign dignitaries. They were such popular items that whole troops would stop at the campsite and ask to trade for buckles. Max was forced to tell them that Mr. Silber had just gone off to an activity.



For the 4th National Jamboree in 1957, Max served in Public Relations for Region 1. He wanted to make a buckle which duplicated the international design - two pieces with a fleur-de-lis in the center. This preceded use of this design by the National Council, and helped instigate National to adopt it. As an experiment, Max also produced a small number of these buckles in white bronze/nickel silver. A third item produced for this Jamboree was a plaque featuring a kneeling George Washington. Two hundred of these friendship gifts were made.

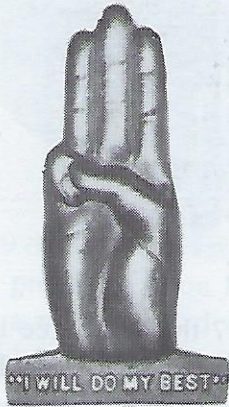


Max worked in the Region 1 Host Tent at both the 1960 and 1964 Jamborees. The 1960 buckle was the last of the two-part design, and the 1964 the first with core work to help solidify the attachment of the back loop and prevent breakage.

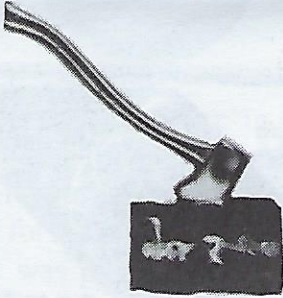


In the early 1960's, Max produced a bronze hand making the Scout Sign. Some were put on plaques and distributed to Region

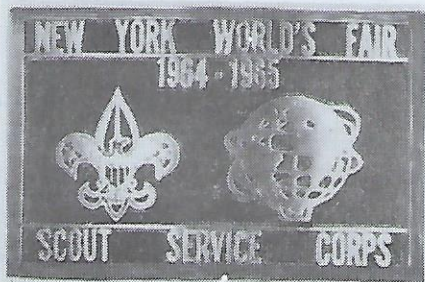
1 executives to use as appreciation gifts. Max has continued to produce this plaque which he gives as part of his gifts to new Eagle Scouts when he presents the badge. The sign without the plaque is also distributed as an appreciation paperweight by the Daniel Webster council.



Max also produced about four hundred ax-in-log neckerchief slides for giveaways to Woodbadgers.



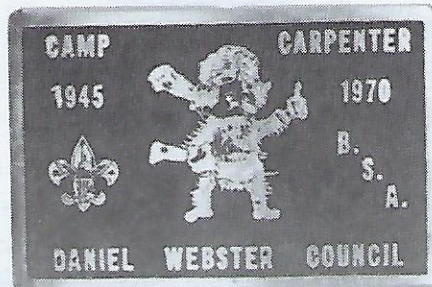
In 1965, when Max served as Scoutmaster of DWC's Service Troop at the New York World's Fair, he cast the first buckle that was produced for a non-Jamboree event.



Max traveled to Idaho as a National Host for both the 1967 World Jamboree and the 1969 National Jamboree. At the former, he was host to Lady Baden-Powell, and several of his buckles found a place in her display of treasured memorabilia.

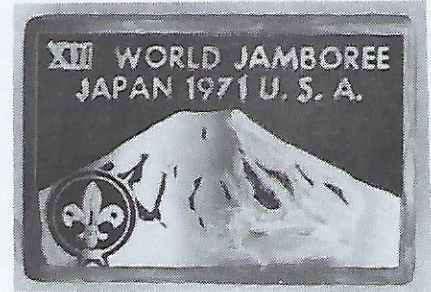


Daniel Webster Council Camp Carpenter celebrated its 25th Anniversary in 1970. The buckle for this occasion featured the "Old Timer" symbol long associated with the Camp, and it was distributed to Camp Staff and Council Scouters.



Max chaired the Region 1 Jamboree Committee in 1971, and, although he could not travel to Japan, he arranged for buckles to be presented to the entire American

leadership as well as to the Region 1 Scouts.



The BOYPOWER campaign of 1972 resulted in the first buckle that could be earned. The Daniel Webster Council established requirements for Scoutmasters consistent with BOYPOWER goals and then distributed the buckle over a two-year period.



The 1973 Jamboree was the last at which Max served on staff. People hounded him for his buckles and he was unable to do his assigned duty. He was in the Northeast Region Host tent and gave buckles to all the Region staff as well as the DWC Scouts who, by now, knew well the value of their gifts and might be enticed to swap one "for an arm or leg"!



In 1973 the National Council honored Max Silber with the Silver Buffalo Award. Max made a gift to himself of a Buffalo buckle in white bronze, and he has since presented similar gifts to friends who have also received the award. Clearly, this buckle has the most limited distribution.



Max Silber has always provided buckles as gifts, and has never realized a penny in return. In line with this philosophy, he has donated literally thousands of buckles to support one of his favorite projects, the Lawrence L. Lee Scouting Museum in Manchester, NH. Max was the principal benefactor of the Museum which opened at Camp Carpenter in 1969. With its Committee of dedicated volunteers, the Museum has grown to become one of the finest depositories of Scout memorabilia in the world. Since 1973 the Museum has sold souvenir buckles with all the proceeds going into the Museum Trust Fund.



Max visited the 14th World Jamboree in Norway with a Friendship Tour and provided the usual gift-giving items.



In 1976 the Wood Badge buckle was introduced with a promotional ad in SCOUTING magazine "Scout's honor, do you hold the beads?" and offered as a gift for a donation to the Museum Trust Fund.

PRINTER'S ERROR
 SORRY ☹️!
 SEE PICTURE ON
 BACK PAGE

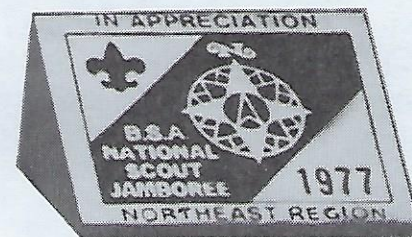
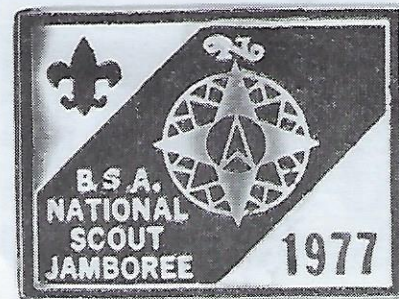
In 1976 Northeast Region Director Ben Love asked Max to produce an appreciation gift for Regional professionals who met their Sustaining Membership goals. The idea was extremely successful and repeated a second year with white bronze.



1977 saw the implementation of Green Bar Bill's ALL OUT FOR SCOUTING program. Max produced a replica of the patch in buckle form for Daniel Webster Scouts who completed the program, and gave several to Bill Hillcourt.



By 1977 the Jamboree buckle was part of the routine and distributed in the usual manner. The Jamboree logo was also used on three hundred appreciation desk plaques presented as gifts to the Northeast Region staff.



Friendship Gifts had become so ingrained in Max that when the 1979 World Jamboree was announced for Iran, he designed a

buckle based on the B.S.A. contingent logo, and produced samples. The Jamboree was cancelled in November 1978, but the buckles on hand were distributed to the Northeast Region leaders who had already been selected.



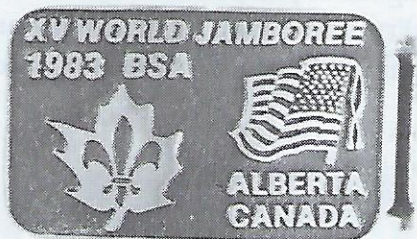
In 1979 the National Exploring Division prevailed upon Max to produce a very limited edition buckle which they then distributed.



In a similar manner, in 1981, DWC Council Commissioner Ray Helgemoe asked Max to make a buckle for a year-long contest. The buckle was presented by Ray to those Commissioners who met the requirements.



In 1981 the 10th National Jamboree in Virginia, and in 1983, the 15th World Jamboree in Alberta were commemorated in the usual way.



Daniel Webster Council held a council-wide Jamboree in 1984, as part of the 75th Anniversary celebration of the BSA. The Jamboree Committee used one thousand buckles as a fundraiser for the event. An additional two hundred were made to support the Museum Trust Fund.



Three buckles were produced in 1985. In addition to the usual Jamboree issue (which was the first to carry Max's logo on the back), an Eagle Scout buckle in bronze joined the Museum and Wood Badge issues as fundraisers. Max donated buckles to the Council Chapter of the National Eagle Scout Association which bears his

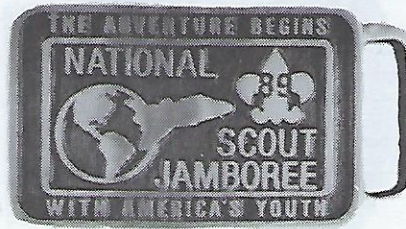
name, and also to the Museum. The buckles are used as thank-you gifts and any proceeds are put in the respective trust funds.



The final 1985 issue was made for Don Brereton, a leader of the BSA contingent to the XIV Australian Jamboree and distributed by him.



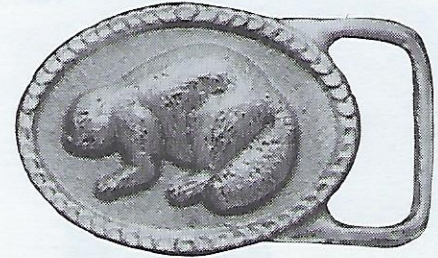
In 1988 three new Silber buckles were issued, two of them for the 16th World Jamboree. The first featured the World Jamboree logo and was distributed in the usual fashion: one to each New England Area Scout, and one to each of the BSA contingent staff. The second, with the BSA contingent logo was a special limited edition sold for the benefit of the Museum Trust Fund.



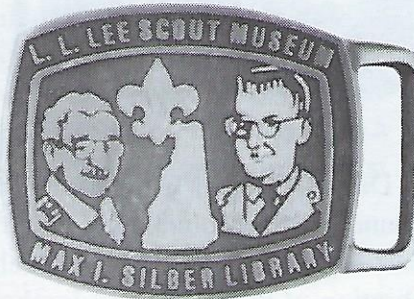
In 1992 the existing Eagle Scout buckle was cast in nickel silver as was a new Silver Beaver buckle. Both are suitable for civilian wear, and the sale of them greatly benefits the Museum Trust Fund.



A new Museum buckle was designed as part of the 20th Anniversary celebration. It featured portraits of Max and Lawrence L. Lee.



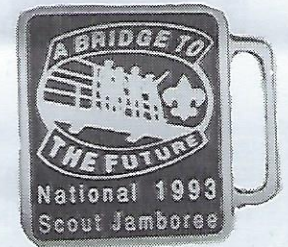
The 2nd Daniel Webster Council Jamboree attracted over five thousand participants. A commemorative buckle was sold for the benefit of the Council.



One buckle was produced in 1993, for the 13th National Jamboree. Unlike previous Jamboree issues, distribution was limited to New Hampshire Scouts and Staff attending the Jamboree. The increasing cost of production was beginning to take a toll.



Two buckles were issued in 1991. For the 17th World Jamboree in Korea, only 350 were made and presented to the BSA contingent staff and to the one Scout from New Hampshire who attended the Jamboree. The second buckle was a reissue of the 1981 Commissioner Staff buckle. DWC Council commissioner, Ed Rowan ordered 200 to present to Commissioners who completed certain requirements. While the front is from the same mold as the 1981 issue, the 1991 is different in that the back carries the Max I. Silber-Nashua, NH logo.

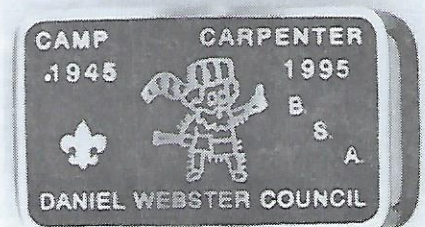


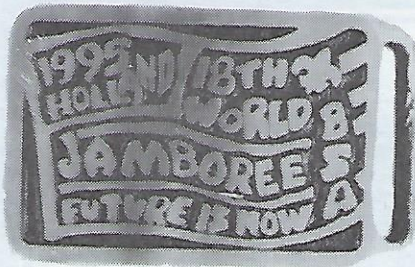
1989 also saw the issue of three new buckles. The first was an Order of the Arrow Vigil Honor buckle for the benefit of Passaconaway Lodge #220 and the Museum Trust Fund.

1995 was the year of the 50th Anniversary of Camp Carpenter, the 18th World Jamboree in Holland, and the 3rd Daniel Webster Council Jamboree. Each event was commemorated with a buckle. A small number of World and Council Jamboree buckles were cast in nickel silver as special gifts.

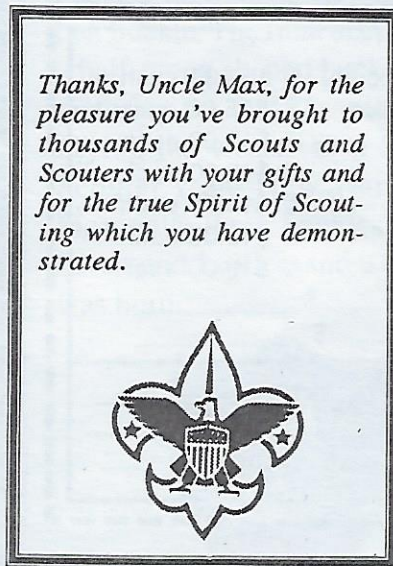
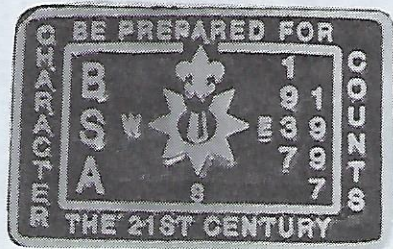


The 12th National Jamboree buckle was distributed in the usual way.





The 1997 National Jamboree buckle was again presented only to New Hampshire Scouts. The many Daniel Webster Council Scouters on staff were able to purchase one at cost.



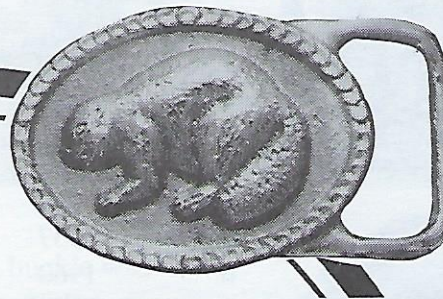
The following chart lists the production numbers for each of the Silber buckles. A complete set is on display in the Max 1. Silber Scouting Library at the Museum.

1.	1950	2nd National Jamboree	700
2.	1953	3rd National Jamboree	800
3.	1955	8th World Jamboree	700
4.	1955	Region 1	500
5.	1957	4th National Jamboree	750
5a.	1957	4th National Jamboree (nickel silver)	50
6.	1960	5th National Jamboree	800
7.	1964	6th National Jamboree	1000
8.	1965	World's Fair '64-'65	400
9.	1967	12th World Jamboree	1000
10.	1969	7th National Jamboree	1000
11.	1970	Camp Carpenter	350
12.	1971	13th World Jamboree	700
13.	1972	DWC BOYPOWER	350
14.	1973	8th National Jamboree	2000
15.	1973	L.L. Lee Museum	unlimited
16.	1973	Silver Buffalo	25
17.	1975	14th World Jamboree	1100
18.	1976	Woodbadge	unlimited
19.	1976	SME: Northeast Region	125
19a.	1976	SME: Northeast Region (nickel silver)	125
20.	1977	All Out For Scouting	400
21.	1977	9th National Jamboree	1450
22.	1979	15th World Jamboree - Iran	100
23.	1979	Exploring Division	100
24.	1981	10th National Jamboree	1200
25.	1981	DWC Commissioners	300
26.	1983	15th World Jamboree	1100
27.	1984	1st DWC Jamboree	1200
28.	1985	11th National Jamboree	1400
29.	1985	Eagle Scout - bronze	unlimited
30.	1985	14th Australian Jamboree	125
31.	1988	16th World Jamboree	1200
32.	1988	16th World Jamboree (round)	500
33.	1988	2nd DWC Jamboree	1000
34.	1989	OA Vigil Honor	unlimited
35.	1989	12th National Jamboree	1300
36.	1989	Silber Library/Lee Museum	unlimited
37.	1991	17th World Jamboree	350
38.	1991	DWC Commissioner #2	200
39.	1992	Eagle Scout (nickel silver)	unlimited
40.	1992	Silver Beaver	unlimited
41.	1993	13th National Jamboree	550
42.	1995	Camp Carpenter - 50th	500
43.	1995	18th World Jamboree	300
43a.	1995	18th World Jamboree (nickel silver)	50
44.	1995	3rd DWC Jamboree	250
44a.	1995	3rd DWC Jamboree (nickel silver)	50
45.	1997	14th National Jamboree	300

The Silver Beaver, Eagle, OA Vigil, and Wood Badge buckles may be purchased only by or for the holders of these awards,



EAGLE (bronze & nickel silver)



SILVER BEAVER (silver)

A CIRCLE OF FRIENDS

Max Silber created a "Circle of Friends" a half a century ago by crafting his buckles as Friendship Gifts - reaching around the world... and now the Universe and all of Space.



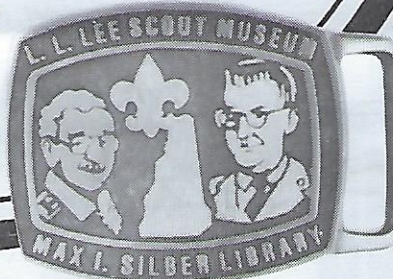
OA VIGIL (bronze)



WOOD BADGE (bronze)



MUSEUM (bronze)



20th ANNIVERSARY (bronze)

You can purchase any of the buckles on this page to give to a Scout, Scouter, or a Friend.

Send To:
Scouting Museum
P.O. Box 1121
Manchester, NH. 03105

Shipping & Handling Charges
\$ 0-10.00 add..... \$2.00
10.01-25.00..... 3.00
25.01-50.00..... 4.00
50.01 and over..... Postage Paid

(Checks payable to:
SCOUTING MUSEUM)

Please send me:

- ___ Silver Beaver Buckle(s) @ \$30.00 each
- ___ Eagle(s) - nickel silver @ \$25.00 each
- ___ Eagle(s) - bronze @ \$13.00 each
- ___ Wood Badge(s) @ \$18.00 each
- ___ OA Vigil(s) @ \$18.00 each
- ___ Museum(s) @ \$18.00 each
- ___ 20th Anniversary @ \$18.00 each

Shipping & Handling.....\$ _____
Total.....\$ _____

Name (print) _____
Address _____
City _____ State _____ Zip _____



EXP. DATE
MO. YR.

CARD NUMBER
1 2 3 4 5 6 7 8 9 10 11 12 13 14 15 16

