

DANIEL WEBSTER COUNCIL
CAMP MANNING
 BOY SCOUTS OF AMERICA



Season 1938

July 3 to August 28



CAMP ADDRESS:
 R. F. D. 3
 Laconia, N. H.
 Tel.—Laconia 4301-5

COUNCIL ADDRESS:
 795 Elm Street,
 Manchester, N. H.
 Tel.—Manchester 2790

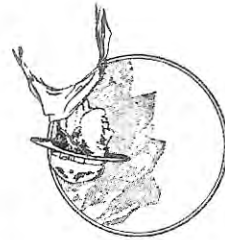
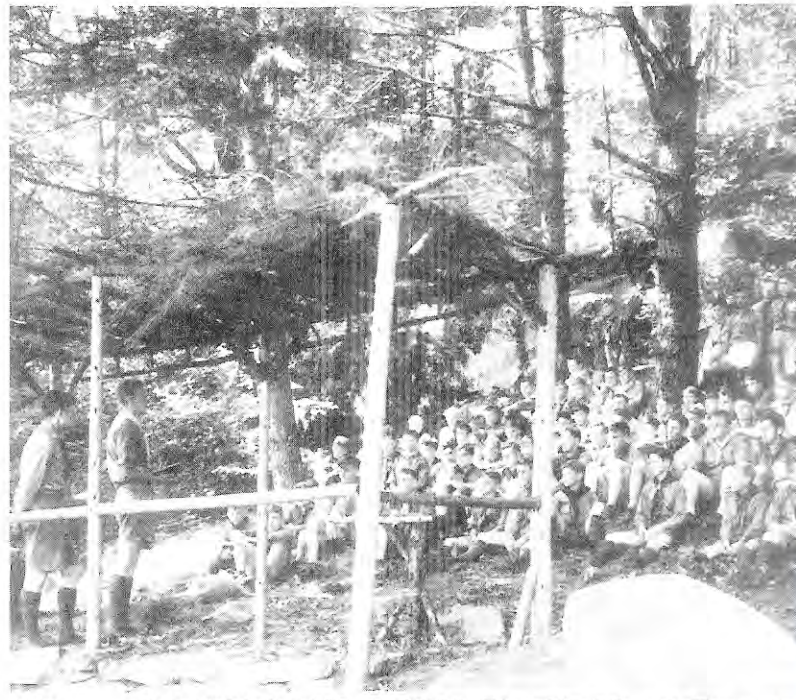
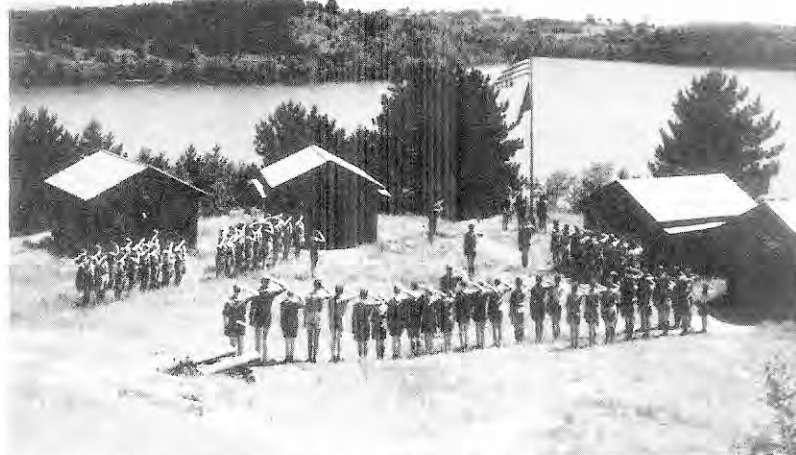
Hi! Scout

If you are going to eat a pie you want the whole thing—filling and all—not just the crust. As a Scout you want the whole of Scouting, too. The best part of Scouting is camping. Camp Manning offers you the chance to complete your Scouting year with two weeks or more of Scout camping that will give you opportunities for learning Scouting skills and making advancement, for developing self-reliance and leadership ability, for Scout fellowship and adventure. Opportunity is knocking at your door. Attend Camp Manning this summer.

Camp Manning

is operated by the Daniel Webster Council for all New Hampshire Scouts. It is located on beautiful Manning Lake at the base of the Belknap Range in the town of Gilmanton, just north of Gilmanton Iron Works. The camp season has four two-week periods beginning July 3 and closing August 28, and the camp fee is \$8.00 per week.

Camp Manning is operated by trained Scout leaders, in addition to those Scoutmasters who attend with their Troops. Nature lore, woodcraft, hiking, swimming, life saving, boating and canoeing, forestry, pioneering and craftwork are a part of the interesting program. Facilities include cabins and tents, dining hall, infirmary, athletic field, and excellent waterfront, with boats and canoes.



START RIGHT WITH A *New* **UNIFORM**



They're here, at last! . . . Those good old camping, hiking and out-of-door days that every Scout has been looking forward to. Days crammed full of adventure and romance. Gee, it's swell to be a boy and it is twice as swell to be a Scout! . . . But, don't go off half-cocked. You've planned all winter for just the things you are now going to do. Don't spoil it by making a poor start. Naturally, as a Scout the first thing that comes to your mind is your Uniform. Start right! Get yourself a brand new Sweet-Orr made Official Boy Scout Uniform . . . A Uniform that feels free where it should but is snug in the right place too. . . . A practical outfit for fellows who like to get out and do things.

The Official Boy Scout Uniform is the most comfortable Uniform that any boy can buy. It will keep you cool under sun and rain, but will see you through the toughest kind of wear that you can give it. . . . Get a new Sweet-Orr made Official Boy Scout Uniform for camp and enjoy it.



Today the Official Boy Scout Uniform as made by Sweet-Orr is the neatest thing to perfection that an all-round, hard-wearing excellent appearing Uniform can be. Insist on the Official.

There is only one "Official" Uniform and it bears the name Sweet-Orr on the label together with the Boy Scout Seal. No Uniform is Official without these.

DO NOT ACCEPT SUBSTITUTES •• PURCHASE FROM

YOUR LOCAL SCOUT DISTRIBUTOR

YOUR SCOUTMASTER WILL TELL YOU WHO YOUR LOCAL DISTRIBUTORS ARE

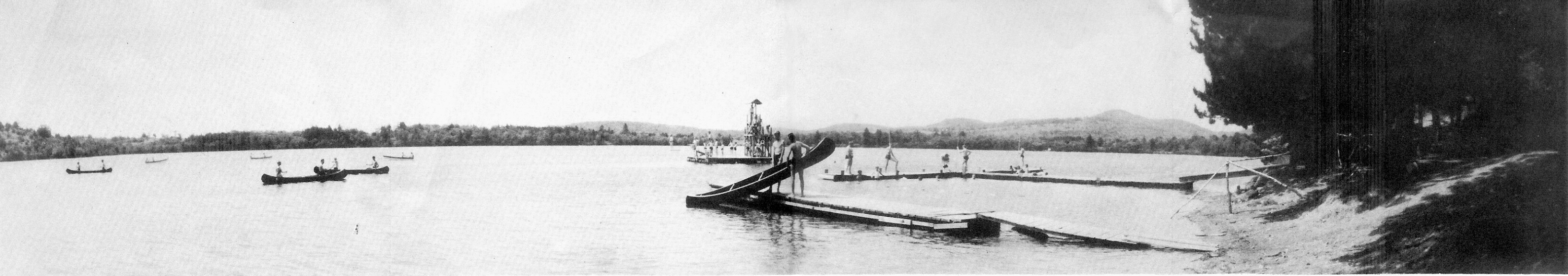
*164 Jagonno St.
 Manchester, N. H.
 Sport Robert M. Gilbert*

DANIEL WEBSTER COUNCIL
 BOY SCOUTS OF AMERICA
 795 Elm Street
 Manchester, New Hampshire

New Hampshire Scout Distributors
Approved by the Daniel Webster Council, Boy Scouts of America

- STAHL-CLARK CO.
Berlin
- DAVID HELLER CO.
Claremont
- CASH OUTLET CO.
Concord
- LOTHROPS-FARNHAM CO., INC.
Dover
- SOLOMON & BARG
Franklin
- W. L. GOODNOW CO.
Keene
- DENNIS O'SHEA
Laconia
- RICHARDSON & LANGLOIS
Lebanon
- MACLEOD'S DEPT. STORE, INC.
Littleton
- CHAS. M. FLOYD CO.
Manchester
- THE BESSE-SYSTEM CO.
Manchester
- THE BESSE-BRYANT CO.
Nashua

- Outdoor Service Outfit**
- No. 503. Official Boy Scout Hat \$2.25
 - No. 687. Service Shirt, V-Neck, Short Sleeves 1.60
 - No. 688. Service Shorts 1.35
 - No. 528. Official Stockings50
 - *Plain Color Neckerchief50
 - Neckerchief Slide10
 - No. 529. Official Belt50
 - Total \$6.80
 - *Combination Color Handkerchief 10c Extra



CAMP MANNING

Registration

We hope you'll come with your entire Troop or Patrol, or you may find it necessary to come alone or with your chum. Sign up early. If you have a preference for Cabin or Tent, be sure to indicate it on your registration card. Your Scoutmaster has a supply of these cards.

Your registration fee of \$1.00 must accompany your application and is not returnable in case of withdrawal. Cost of a two-week period is \$16.00, not including registration fee. Campers can be accepted for shorter or longer periods at the same rate by special arrangement.

A health examination is required for every camper shortly before arrival at camp. Blank, and special instructions for campers, will be mailed upon receipt of registration fee at Council office.



What To Bring

Three heavy woolen blankets (or equivalent), toothbrush and paste, two suits of underwear, two pairs of socks or stockings, two pairs of shoes or sneakers, shorts, raincoat, lumberjack or sweater, shirts, soap, towels, washcloth, comb, pajamas, bathing suit, and Scout Handbook. Also, if you have them, bring musical instruments, flashlight, camera, knife, hatchet, or other optional camping equipment.

More About Camp

Sunday services for Protestant Scouts are held in the outdoor chapel...Catholic Scouts attend mass at Alton Bay...Menus are carefully balanced and meals are wholesome and tasty...Swimming and boating are supervised and taught by American Red Cross experts...Weekly Courts of Honor...Campfires under the open stars...Parents and friends are always welcome..Baseball, volleyball, swimming.

How To Get There

For Eastern and Northeastern New Hampshire follow routes 11 or 28 to Alton. Turn West over hard road to Gilmanton Iron Works and follow Camp Manning signs into camp. If approaching camp from Laconia, Concord or Manchester follow signs from Laconia or Pittsfield, to Gilmanton Iron Works.

